



# Folding Arm Awnings

Swedish design for  
Australian conditions



## World class folding arm awning technologies designed to suit every outdoor space.

Folding Arm Awnings by Turnils are European engineered, manufactured to the highest standards.

The entire range of Turnils Folding Arm Awnings feature Dyneema® tape on all elbow and shoulder joints for superior strength and durability, making it 15 times stronger than metal chains. Dyneema® is an innovative lightweight and durable technology offering exceptional resistance to moisture and UV.

With a modern style and refined finish, all folding arm awnings are available in three contemporary hardware colours: White, Silver, Black.

# Sirocco

Consisting of six models, the Sirocco range is designed to provide a comprehensive selection of contemporary shade solutions.

Based on a clever modular Swedish design, the Sirocco range features a variety of sizes and functions, each with a unique versatility to suit spaces from compact terraces to wide expanses.

Sirocco folding arm awnings feature simple operating options:

- External operation by manual gear or motorisation
- Internal motorised operation with optional sun and wind sensors available to create a seamless automated solution.

The awnings are designed for easy installation directly onto the wall or under the eaves with additional flexible roof brackets available for easy roof mounting.



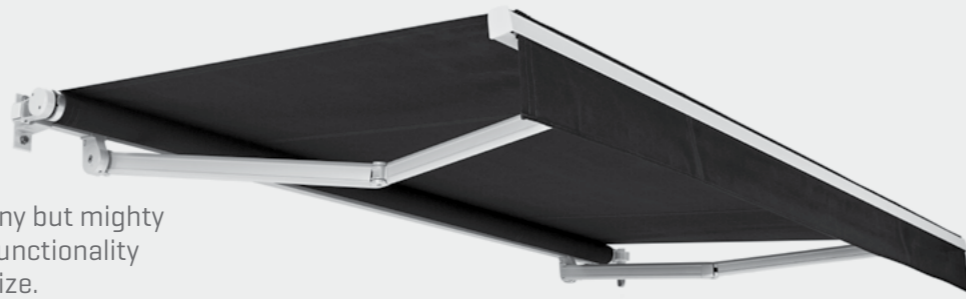
## Sirocco Models

Refer to our technical data for full specifications.

### FA22 Piccolo

Width from 1.75m to 5.0m per unit

Perfect for smaller spaces, this tiny but mighty system features all of the same functionality of the larger units in a compact size.



### FA46 Fabric-Beam

Width from 2.05m to 7.0m per unit

Designed with a support beam across the width of the awning to create ample clearance for opening doors.



### FA42 Classic

Width from 1.99m to 7.0m per unit

The cornerstone of the Turnils range. A classic folding arm awning suitable for large spaces.

### FA48 Semi-Cassette

Width from 1.94m to 7.0m per unit

A compact semi-cassette design to provide additional protection for the awning fabric.



### FA44 Design

Width from 1.99m to 7.0m per unit

A premium designer finish with details such as pressure die casted end brackets.



### FA45 Cross-Over

Width from 1.13m to 4.6m per unit

Engineered with cross over arms to enable a large projection on a smaller width, perfect for long narrow spaces.



Series link available



Pitch control optional



# Viento

## FA58 Viento Semi-Cassette



Width from 1.955m to 7.0m per unit

The latest addition to the Turnils range the FA58 features a smooth curved hood for a compact streamlined look providing additional protection for the awning fabric and componentry.

The Viento can be mounted onto walls, under ceilings or the roof with special brackets, making it a versatile solution for larger spaces.

Fully motorised, Viento covers a maximum projection of up to 4.0m [at 6.0m width].



Pitch control set at time of installation

# Cabrera

The fully motorised as standard Cabrera and Cabrera XL range are heavy-duty, full cassette awnings offering extra fabric and hardware protection. Engineered to provide exceptional durability with a stylish finish for residential or commercial properties.



## Cabrera

Width from 2.15m to 5.0m per unit

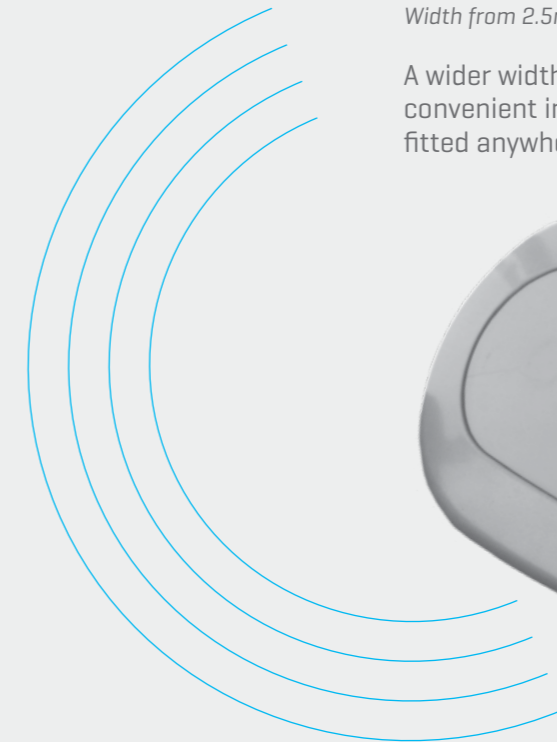
A premium full-cassette design that completely encloses the awning when retracted, protecting the awning fabric and components from debris and moisture.



## Cabrera XL

Width from 2.5m to 7.0m per unit

A wider width variation of the Cabrera featuring convenient installation brackets that can be fitted anywhere along the back of the awning.





Turnils Folding Arm Awnings are offered with a range of optional extras to further improve shading comfort, awning operation and functionality.

## Automated Comfort

Add motorisation for the ultimate in outdoor comfort; powered by an efficient merger motor you can control up to 4 awnings on one remote.

- Single channel remote for 1 awning
- 4 or 8 channel remote for multiple awnings
- Timer remote with 4 channels for easy, set-and-forget operation

For the ultimate in convenient smart operation, add sun and wind sensors to your awnings.

These clever, solar-powered, wireless sensors can be programmed to automatically open your awnings when the sun reaches a certain level, or retract your awnings in wet or windy conditions.

A wireless motion sensor is also available. The sensor measures the amount of movement created by wind on the front bar and automatically retracts the Folding Arm Awning.



Motorisation



Motion Sensor



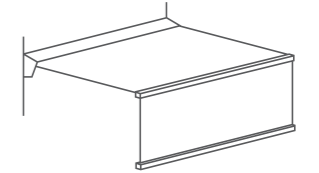
Sun & Wind Sensor

## Customisation

Tailor your outdoor shade solution to fit your own specific needs from an array of customisation options.

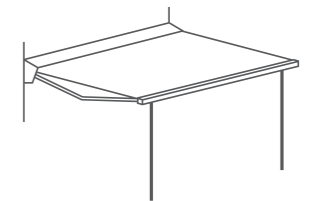
### Roller Valance

Create an additional front fabric drop for maximum shade protection. Partnered with sunscreen fabric the valance can accommodate a drop of up to 2.1m and is operated by a manual crank.



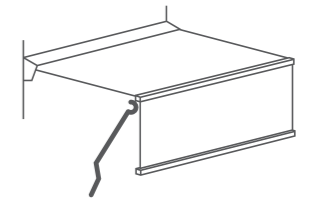
### Telescopic Support

Providing next-level stability where very wide awnings need to be open for extended periods of time. The support beams slide neatly into the front profile extending to the ground.



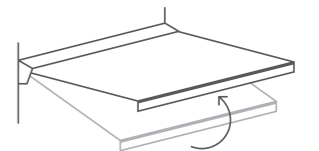
### Crank Handles

Colour matched to hardware, crank handles provide easy manual operation. Available in a choice of lengths (0.8m, 1.2m, 1.6m, 1.8m, 2.0m and 2.4m each in selected colours) each with ergonomic handles for a comfortable grip.



### Pitch Control

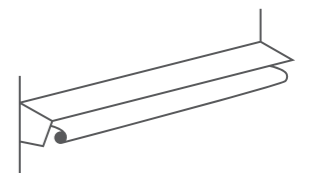
Providing maximum shading comfort with a range of  $-5^{\circ}$  to  $-40^{\circ}$ , projection angle control is available depending on the model. Operation is simple with our unique easy-tilt function allowing adjustment when the awning is projected.



*Some models have pitch control set at the time of installation. Please refer to our technical data for full specifications.*

### Hood

Offers additional protection and premium styling, assisting with fabric longevity.



# Technical data

Compare the Sirocco, Viento and Cabrera models to find the right solution for any outdoor space.

The Beaufort Wind Scale

Class	Wind Strength	Wind Speed (km/h)	Wind Speed (m/s)	Pressure (N/m <sup>2</sup> )
0	1-3	≤ 19	≈ 5.3	<40
1	4	20-28	≈ 7.7	40
2	5	29-38	≈ 10.5	70
3	6	39-49	≈ 13.6	110

Awnings must be mounted with the correct number of installation brackets and with suitable fasteners in order to match the specified wind classes.

	Sirocco			
	FA22 Piccolo	FA42 Classic	FA44 Design	FA45 Cross-Over
	<i>Ideal for smaller spaces</i>	<i>Classic styling for larger spaces</i>	<i>A premium designer finish</i>	<i>Cross over arms enables a large projection in narrow spaces</i>
<b>Projection</b>	1.0, 1.5m, 2.0m, 2.5m, 3.0m	1.6m, 2.0m, 2.5m, 3.0m, 3.5m, 4.0m	1.6m, 2.0m, 2.5m, 3.0m, 3.5m, 4.0m	1.6m, 2.0m, 2.5m, 3.0m, 3.5m, 4.0m
<b>Min. width</b>	1.75m	1.99m	1.99m	1.13m
<b>Max. width</b>	5.0m per unit	7.0m per unit [Max. 6.0m at 4.0m projection]  Series connection up to 15.0m	7.0m per unit [Max. 6.0m at 4.0m projection]  Series connection up to 15.0m	4.6m per unit
<b>Pitch angle</b>	-	-5° to -40° <sup>1</sup> Adjustable	-5° to -40° <sup>1</sup> Adjustable	-
<b>Wind Rating<sup>2</sup></b>	Class 2 [Up to 38kh/hr]	Class 2 [Up to 38kh/hr]	Class 2 [Up to 38kh/hr]	Class 2 [Up to 38kh/hr]
<b>Beaufort Scale Equivalent</b>	5	5	5	5
	Optional Accessories			
<b>Motorisation</b>	✓	✓	✓	✓
<b>Pitch Control</b>		✓	✓	
<b>Roller Valance</b>			✓	✓
<b>Hood</b>	✓	✓	✓	✓
<b>Telescopic Support</b>	✓	✓	✓	✓
<b>Crank Handles</b>	✓	✓	✓	✓

<sup>1</sup> Variable pitch angle applies only when the Pitch Control feature is added

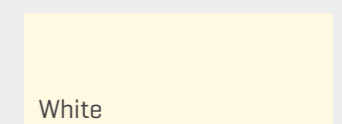
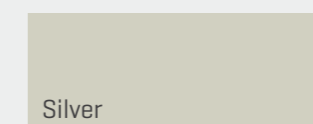
<sup>2</sup> Under European Standard 'EN 13561 External blinds - Performance requirements including safety', the above Folding Arm Awning models will meet wind ratings of up to Class 2 - wind speed of up to 29-38km/hr (equivalent to 5 on Beaufort scale) - depending on model no. and size. NOTE: These results will only be achieved provided the awning is built and installed with Turnils components according to the Manufacturer's specifications (as stated in the component book) and with a fabric according to the above standard. It is recommended that all awnings be retracted during wet or windy conditions.

Refer to our manufacturer's guide for full limitations, width, projection and wind rating information.

<sup>^</sup>Model features variable pitch that is set at the time of installation

	Sirocco	Viento	Cabrera		
	FA46 Fabric-Beam	FA48 Semi-Cassette	FA58 Viento	Cabrera	Cabrera XL
	<i>Fabric beam creates ample clearance for opening doors</i>	<i>Semi-enclosed compact style</i>	<i>Contemporary styling with near full-cassette look</i>	<i>Premium motorised full-cassette design</i>	<i>Extra Large premium motorised full-cassette design</i>
	1.6m, 2.0m, 2.5m, 3.0m, 3.5m, 4.0m	1.6m, 2.0m, 2.5m, 3.0m, 3.5m	1.6m, 2.0m, 2.5m, 3.0m, 3.5m, 4.0m	2.0m, 2.5m, 3.0m, 3.5m	2.0m, 2.5m, 3.0m, 3.5m, 4.0m
	2.05m	1.94m	1.955m	2.15m	2.5m
	7.0m per unit [Max. 6.0m at 4.0m projection]  Series connection up to 15.0m	7.0m per unit  Series connection up to 15.0m	7.0m per unit [Max. 6.0m at 4.0m projection]	5.0m per unit	7.0m per unit [Max. 6.0m at 4.0m projection]
	-5° to -40° <sup>1</sup> Adjustable	-5° to -40° <sup>1</sup> Adjustable	0° to -20° <sup>^</sup>	-5° to -45° <sup>^</sup>	-5° to -40° <sup>^</sup>
	Class 2 [Up to 38kh/hr]	Class 2 [Up to 38kh/hr]	Class 2 [Up to 38kh/hr]	Class 2 [Up to 38kh/hr]	Class 2 [Up to 38kh/hr]
	5	5	5	5	5
	✓	✓	Standard	Standard	Standard
	✓	✓	^	^	^
	✓	✓			
	✓	✓	Standard	Standard	Standard
	✓	✓	✓		
	✓				

Available in 3 hardware colours.





# Swedish design for Australian conditions



For more information contact us:  
[customerservice@bricos.com.au](mailto:customerservice@bricos.com.au)

[turnils.com.au](http://turnils.com.au)

For more information contact us: [customerservice@bricos.com.au](mailto:customerservice@bricos.com.au)  
© Copyright 2017 Hunter Douglas Limited [A.B.N. 98 009 675 709], 08/2017.  
® Registered Trade Marks of Hunter Douglas Limited. TURNILS is a registered Trade Mark of  
Hunter Douglas Scandinavia AB. DYNEEMA is a registered Trade Mark of DSM IP Assets B.V  
NOTE: Warranty conditions apply. Refer to [turnils.com.au](http://turnils.com.au) for details.